

Year 2 Spelling:

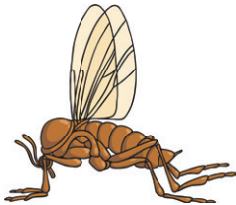
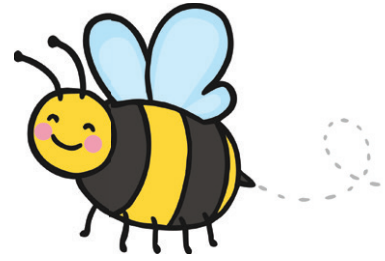
'n' sound spelt 'kn' and 'gn'

Learning from Home Activity Booklet

Statutory requirements	Activity sheet	Page number
Pupils should learn how to spell the 'n' sound spelt 'kn' and (less often) 'gn' at the beginning of words.	Spelling Bee's Match Challenge	2
	Spelling Bee's Trace and Write	3
	Spelling Bee's Grapheme Challenge	4
	Beehive	5
	Spelling Bee's Jumbled Words	6
	Spelling Bee's Sentence Challenge	7
	A Parent's Guide	8

Spelling Bee's Match Challenge

Spelling Bee wants you to complete this challenge. All these words contain the 'n' sound when it is spelt with 'kn' or 'gn'. Both these graphemes make a short 'n' sound like in 'nose'. Look at the pictures below. Write the correct word from the bottom of the page underneath the picture it matches.













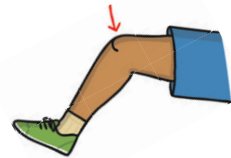








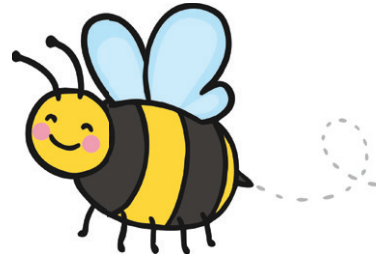




design	gnaw	signed	gnome	sign	gnat
knight	knee	knot	knife	knitting	knock

Spelling Bee's Trace and Write

Spelling Bee wants you to complete this challenge. All these words contain the short 'n' sound when it is spelt with 'kn' or 'gn'. Trace over each word and then write it several times on the line.



gnat

gnome

sign

gnash

knight

know

knock

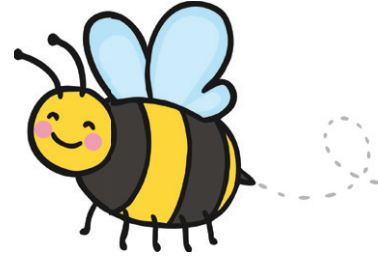
knit

knee

knife

Spelling Bee's Grapheme Challenge

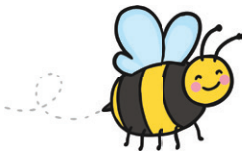
Below, Spelling Bee has set you a challenge. The words below are missing a short 'n' sound. However, in all these words 'n' is written with either 'kn' or 'gn'. Fill in the missing letters with 'kn' or 'gn'.



__ee __at __ow __ew

__itting __ight __ome __ashed

__ock si__ __awed

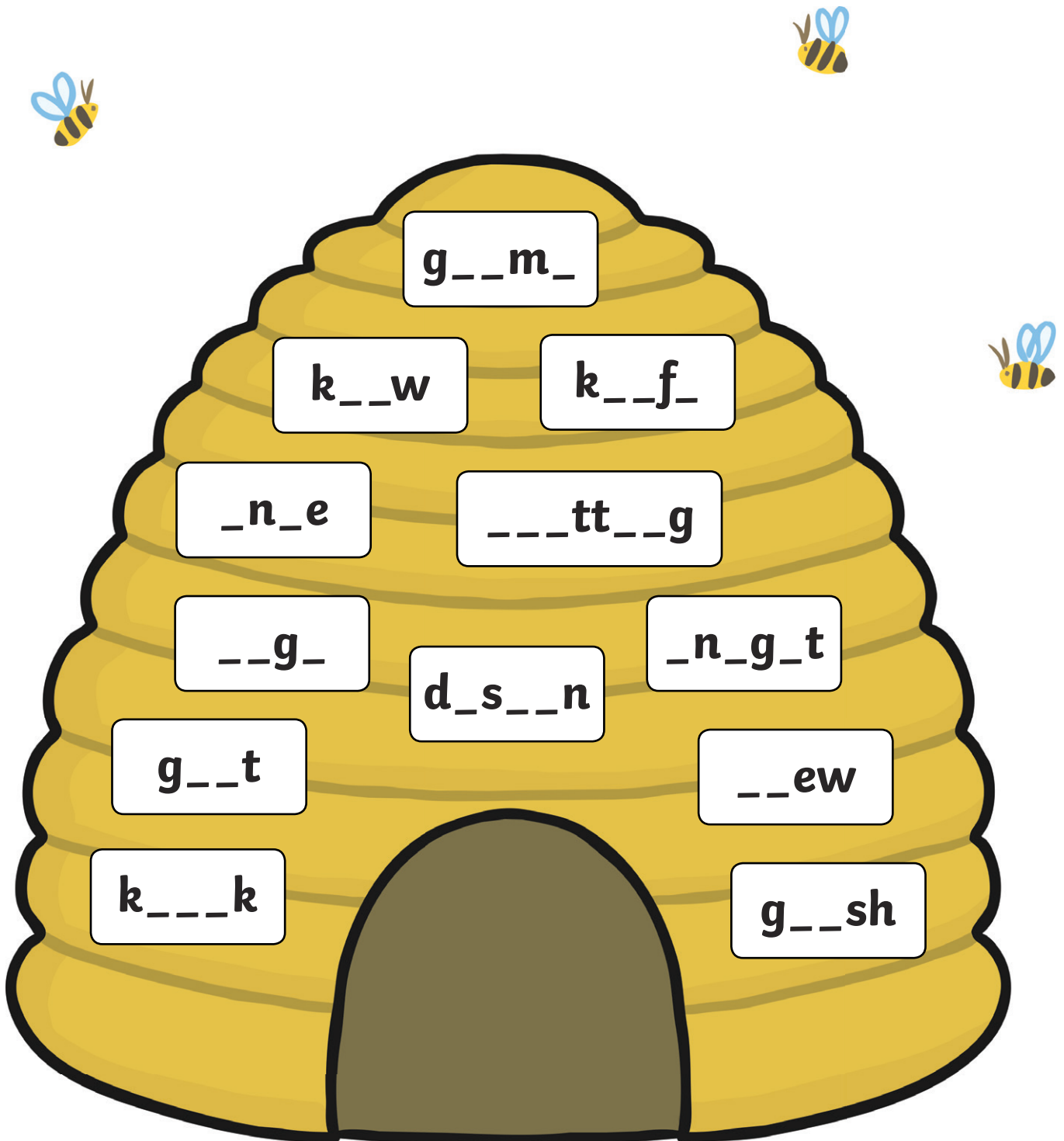


Well done! Now, using the words above, fill in the blanks in the sentences below.

1. There was a _____ on the door.
2. I hurt my _____ when I fell.
3. The dog _____ his teeth.
4. My nana is _____ a jumper for me.
5. _____ are small insects with two wings.
6. A _____ is a small statue that you often find in gardens.
7. I _____ the way to the shop in the village.

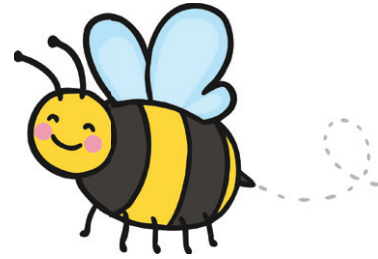
Beehive

Spelling Bee has decorated her beehive with lots of words where the short 'n' sound is spelt with a 'kn' or a 'gn'. However, she hasn't finished writing all the words. Complete the words by filling in the missing letters so Spelling Bee can finish decorating the beehive.



Spelling Bee's Jumbled Words

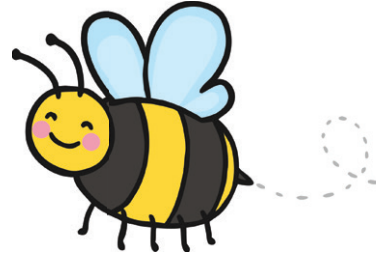
Spelling Bee is solving a puzzle. All the words in the table below have been jumbled up! Help Spelling Bee by rearranging the letters to make the correct spelling.



enke	
ownk	
okkcn	
mengo	
hgtkin	
tagn	
gisn	
finke	
nigsed	
wang	
gknnttii	

Spelling Bee's Sentence Challenge

This is a very tricky spelling challenge. Using the 'kn' and the 'gn' words, try and think of your own sentence that has that word in it. The first one has been done for you.



knee:

I cut my knee when I fell over.

know:

gnawed:

sign:

design:

knock:

knight:

gnome:

A Parent's Guide

In Year 2, one of the spelling targets is to spell words where the short 'n' sound like in nose is spelt with a 'kn' or 'gn' letter pattern.

This booklet has a range of activities to help your child master the spelling of words containing this grapheme. As you complete the booklet with your child, discuss the meaning of each word to ensure they understand the meaning as well as the spelling.

terminology	explanation
phoneme	<p>A phoneme is the smallest unit of sound in speech. When we teach reading we teach which letters represent those sounds. For example:</p> <p>a makes the sound 'a'.</p>
grapheme	<p>A grapheme is a written symbol that represents a sound. They can be 1, 2 or 3 letters. We teach children that graphemes are the written version of sounds. This helps young children when first beginning to read by using the graphemes to 'sound out' words. For example:</p> <p>the grapheme 'igh' makes the sound 'i' like in knight.</p>
digraph	<p>A digraph is when two letters are used to represent one sound. In this booklet, children practise using the digraphs 'kn' and 'gn' that both make the sound 'n' like in <u>n</u>oble or gnome or know. The 'k' and 'g' within the digraphs may be described as a 'silent letter'.</p>

Year 2 Spelling:

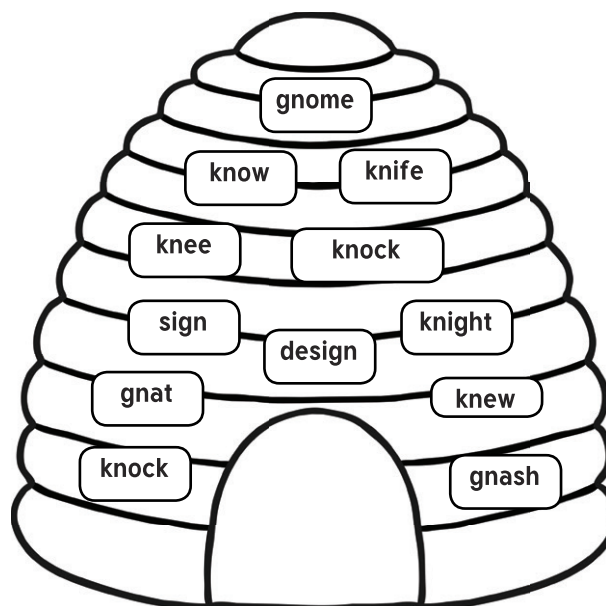
'n' sound spelt 'kn' and 'gn' Answers

Page 4 – Spelling Bee's Grapheme Challenge

knee	knitting	knock
gnat	knight	sign
know	gnome	gnawed
knew	gnashed	

1. There was a knock on the door.
2. I hurt my knee when I fell.
3. The dog gnashed his teeth.
4. My Nana is knitting a jumper for me.
5. Gnats are small insects with two wings.
6. A gnome is a small statue that you often find in gardens.
7. I know the way to the shop in the village.

Page 5 – Beehive



enke	knee
ownk	know
okkcn	knock
mengo	gnome
hgtkin	knight
tagn	gnat
gisn	sign
finke	knife
nigsed	design
wang	gnaw
gknnttii	knitting